

The following sample(s) was/were submitted and identified on behalf of the clients as : MAGNET

SGS Job No. : SP10-008729 - SH  
Composition : NdFeB  
Model No. : Ni  
Date of Sample Received : 07 Apr 2010  
Testing Period : 07 Apr 2010 - 12 Apr 2010  
Test Requested : Selected test(s) as requested by client.  
Test Method : Please refer to next page(s).  
Test Results : Please refer to next page(s).  
Conclusion : Based on the performed tests on submitted samples, the results comply with the RoHS Directive 2002/95/EC and its subsequent amendments.

Signed for and on behalf of  
SGS-CSTC Ltd.

*Sandy Hao*

Hao Jinyu, Sandy  
Lab Manager

This document is issued by the Company subject to its General Conditions of Service printed overleaf, available on request or accessible at [http://www.sgs.com/terms\\_and\\_conditions.htm](http://www.sgs.com/terms_and_conditions.htm) and, for electronic format documents, subject to Terms and Conditions for Electronic Documents at [www.sgs.com/terms\\_e-document.htm](http://www.sgs.com/terms_e-document.htm). Attention is drawn to the limitation of liability, jurisdiction and jurisdiction issues defined therein. Any holder of this document is advised that information contained hereon reflects the Company's findings at the time of its intervention only and within the limits of Client's instructions, if any. The Company's sole responsibility is to its Client and this document does not exonerate parties to a transaction from exercising all their rights and obligations under the transaction documents. This document cannot be reproduced except in full, without prior written approval of the Company. Any unauthorized alteration, forgery or falsification of the content or appearance of this document is unlawful and offenders may be prosecuted to the fullest extent of the law. Unless otherwise stated, the results shown in this test report refer only to the sample(s) tested.



SHCHEM 3387669

Test Results :

Test Part Description :

Specimen No.	SGS Sample ID	Description
1	SHA10-038894.001	Silvery magnet ball

Remarks :

- (1) 1 mg/kg = 1 ppm = 0.0001%
- (2) MDL = Method Detection Limit
- (3) ND = Not Detected ( < MDL )
- (4) "-" = Not Regulated

RoHS Directive 2002/95/EC

Test Method : With reference to IEC 62321:2008

- (1) Determination of Cadmium by ICP-OES.
- (2) Determination of Lead by ICP-OES.
- (3) Determination of Mercury by ICP-OES.
- (4) Determination of Hexavalent Chromium by Spot test / Colorimetric Method using UV-Vis.
- (5) Determination of PBBs / PBDEs by GC-MS.

Test Item(s)	Limit	Unit	MDL	001
Cadmium (Cd)	100	mg/kg	2	ND
Lead (Pb)	1,000	mg/kg	2	ND
Mercury (Hg)	1,000	mg/kg	2	ND
Hexavalent Chromium (CrVI)	-	-	◇	Negative
Sum of PBBs	1,000	mg/kg	-	ND
Monobromobiphenyl	-	mg/kg	5	ND
Dibromobiphenyl	-	mg/kg	5	ND
Tribromobiphenyl	-	mg/kg	5	ND
Tetrabromobiphenyl	-	mg/kg	5	ND
Pentabromobiphenyl	-	mg/kg	5	ND
Hexabromobiphenyl	-	mg/kg	5	ND
Heptabromobiphenyl	-	mg/kg	5	ND
Octabromobiphenyl	-	mg/kg	5	ND
Nonabromobiphenyl	-	mg/kg	5	ND
Decabromobiphenyl	-	mg/kg	5	ND
Sum of PBDEs	1,000	mg/kg	-	ND
Monobromodiphenyl ether	-	mg/kg	5	ND

This document is issued by the Company subject to its General Conditions of Service printed overleaf, available on request or accessible at [http://www.sgs.com/terms\\_and\\_conditions.htm](http://www.sgs.com/terms_and_conditions.htm) and, for electronic format documents, subject to Terms and Conditions for Electronic Documents at [www.sgs.com/terms\\_e-document.htm](http://www.sgs.com/terms_e-document.htm). Attention is drawn to the limitation of liability, jurisdiction and jurisdiction issues defined therein. Any holder of this document is advised that information contained hereon reflects the Company's findings at the time of its intervention only and within the limits of Client's instructions, if any. The Company's sole responsibility is to its Client and this document does not exonerate parties to a transaction from exercising all their rights and obligations under the transaction documents. This document cannot be reproduced except in full, without prior written approval of the Company. Any unauthorized alteration, forgery or falsification of the content or appearance of this document is unlawful and offenders may be prosecuted to the fullest extent of the law. The results shown in this test report refer only to the sample(s) tested.



SHCHEM 3387668

Attention: To check the authenticity of testing Inspector Reports & Certificates, please refer to the following website: [www.sgs.com](http://www.sgs.com)

## Test Report

No. SHAEC1003889401

Date: 12 Apr 2010

Page 3 of 5

Test Item(s)	Limit	Unit	MDL	001
Dibromodiphenyl ether	-	mg/kg	5	ND
Tribromodiphenyl ether	-	mg/kg	5	ND
Tetrabromodiphenyl ether	-	mg/kg	5	ND
Pentabromodiphenyl ether	-	mg/kg	5	ND
Hexabromodiphenyl ether	-	mg/kg	5	ND
Heptabromodiphenyl ether	-	mg/kg	5	ND
Octabromodiphenyl ether	-	mg/kg	5	ND
Nonabromodiphenyl ether	-	mg/kg	5	ND
Decabromodiphenyl ether	-	mg/kg	5	ND

### Notes :

(1) The maximum permissible limit is quoted from the document 2005/618/EC amending RoHS directive 2002/95/EC

(2) ◊ Spot-test:

Negative = Absence of CrVI coating, Positive = Presence of CrVI coating;

The tested sample should be further verified by boiling-water-extraction method if the spot test result is Negative or cannot be confirmed.

◊ Boiling-water-extraction:

Negative = Absence of CrVI coating; Positive = Presence of CrVI coating

The detected concentration in boiling-water-extraction solution is equal or greater than 0.02 mg/kg with 50 cm<sup>2</sup> sample surface area.

For corrosion protection coatings on metals: Information on storage conditions and production date of the tested sample is unavailable and thus results of Cr(VI) represent status of the sample at the time of testing

This document is issued by the Company subject to its General Conditions of Service printed overleaf, available on request or accessible at [http://www.sgs.com/terms\\_and\\_conditions.htm](http://www.sgs.com/terms_and_conditions.htm) and, for electronic format documents, subject to Terms and Conditions for Electronic Documents at [www.sgs.com/terms\\_e-document.htm](http://www.sgs.com/terms_e-document.htm). Attention is drawn to the limitation of liability, jurisdiction and jurisdiction issues defined therein. Any holder of this document is advised that information contained hereon reflects the Company's findings at the time of its inspection only and within the limits of Client's instructions, if any. The Company's sole responsibility is to its Client and this document does not exonerate parties to a transaction from exercising all their rights and obligations under the transaction documents. This document cannot be reproduced except in full, without prior written approval of the Company. Any unauthorized alteration, forgery or falsification of the content or appearance of this document is unlawful and offenders may be prosecuted to the fullest extent of the law. Unless otherwise stated the results shown in this test report refer only to the sample(s) tested.

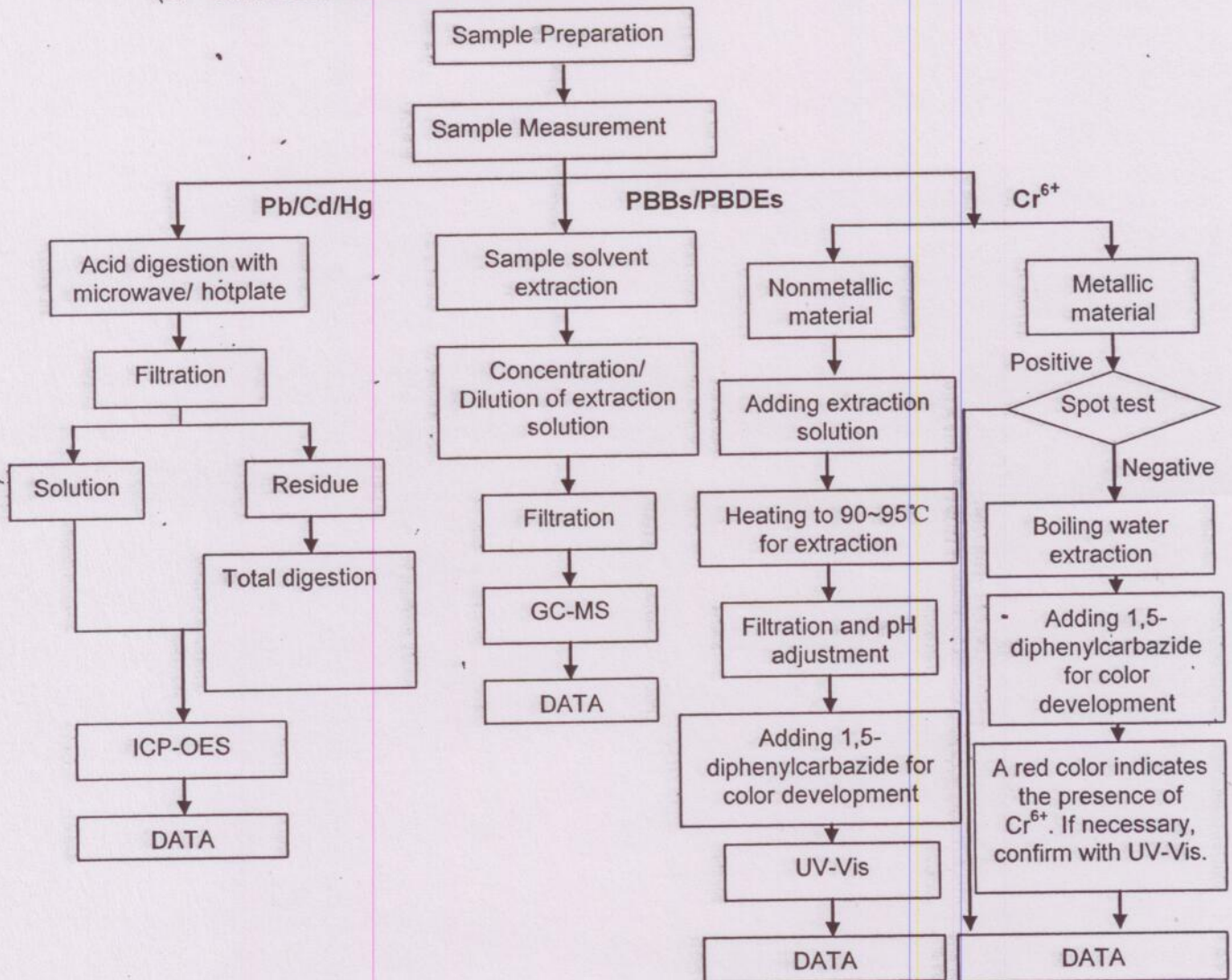


SHCHEM 3387667

- Attention: To check the authenticity of testing inspection report, please visit: www.sgs.com

### ATTACHMENTS

- 1) Name of the person who made measurement: Allan Xiao/Spring Zuo/Frank Fang/ Elim Lin
- 2) Name of the person in charge of measurement: Terry Wang/Phoebe Shen
- 3) These samples were dissolved totally by pre-conditioning method according to below flow chart.  
(Cr<sup>6+</sup> and PBBs/PBDEs test method excluded)



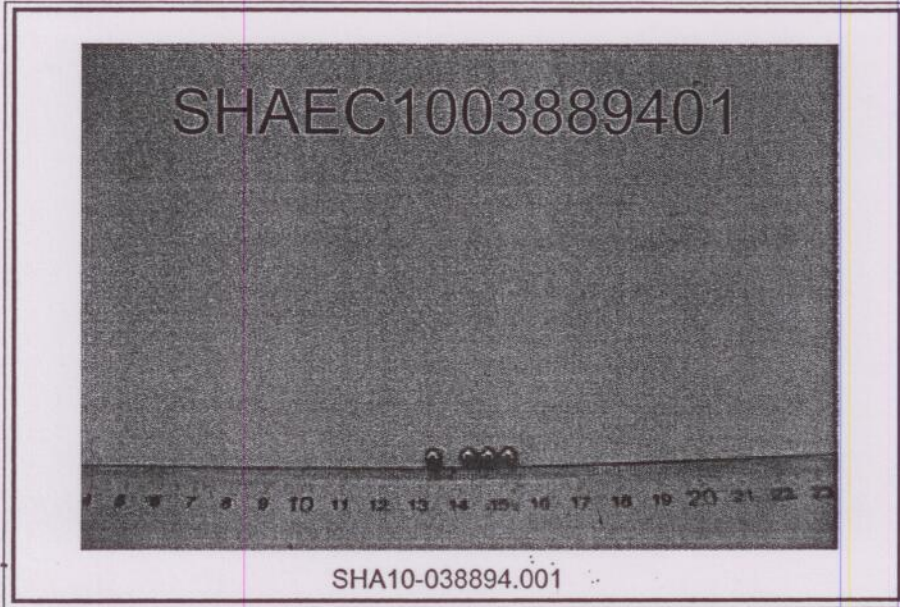
Attention: To check the authenticity of testing inspection report & certificate, pls. verify the information on the website: <http://www.sgs.com>

This document is issued by the Company subject to its General Conditions of Service printed overleaf, available on request or accessible at [http://www.sgs.com/terms\\_and\\_conditions.htm](http://www.sgs.com/terms_and_conditions.htm) and for electronic format documents, subject to Terms and Conditions for Electronic Documents at [www.sgs.com/terms\\_e-document.htm](http://www.sgs.com/terms_e-document.htm). Attention is drawn to the limitation of liability, jurisdiction and jurisdiction issues defined therein. Any holder of this document is advised that information contained hereon reflects the Company's findings at the time of its issue and is valid only within the limits of Client's instructions, if any. The Company's sole responsibility is to its Client and this document does not exonerate parties to a transaction from exercising all their rights and obligations under the transaction documents. This document cannot be reproduced except in full, without prior written approval of the Company. Any unauthorized alteration, forgery or falsification of the content or appearance of this document is unlawful and offenders may be prosecuted to the fullest extent of the law. Results shown in this test report refer only to the sample(s) tested.



SHCHEM 3387666

Sample photo:



SGS authenticate the photo on original report only

\*\*\* End of Report \*\*\*

www.sgs.com.cn | www.sgs.com | info@sgs.com | cn@sgs.com | tel: (86-21) 64500353 | fax: (86-21) 64500353 | email: CN.Doccheck@sgs.com

This document is issued by the Company subject to its General Conditions of Service printed overleaf, available on request or accessible at [http://www.sgs.com/terms\\_and\\_conditions.htm](http://www.sgs.com/terms_and_conditions.htm) and, for electronic format documents, subject to Terms and Conditions for Electronic Documents at [www.sgs.com/terms\\_e-document.htm](http://www.sgs.com/terms_e-document.htm). Attention is drawn to the limitation of liability, jurisdiction and jurisdiction issues defined therein. Any holder of this document is advised that information contained hereon reflects the Company's findings at the time of its intervention only and within the limits of Client's instructions, if any. The Company's sole responsibility is to its Client and this document does not exonerate parties to a transaction from exercising all their rights and obligations under the transaction documents. This document cannot be reproduced except in full, without prior written approval of the Company. Any unauthorized alteration, forgery or falsification of the content or appearance of this document is unlawful and offenders may be prosecuted to the fullest extent of the law. Unless otherwise stated, the results shown in this test report refer only to the sample(s) tested.



## ENGLISH

Thanks for buying NeoCube!

Your NeoCube will give you many hours of pleasure. Start off by experimenting with it and creating any shape you like! If you get stuck and want to know the easiest way to create a cube, a pyramid, a hexagon or any other shape, take a look at YouTube.com and search for NeoCube using phrases such as NeoCube making cube. Also try typing Neo Cube as two words for even more hits.

NeoCube is not a toy and must not be used by children under 3. Children under 8 must only use the NeoCube under adult supervision. Contact a doctor immediately if anyone swallows one or more magnets.

## DEUTSCH

Danke, dass du den NeoCube gekauft hast!

Der NeoCube bietet Spaß ohne Ende! Zu Anfang experimentierst du am besten frei und kreierst selbst Formen. Wenn du nicht mehr weiterweißt oder du lernen möchtest, wie man am einfachsten einen Würfel, eine Pyramide, ein Sechseck oder eine andere Form baut, gehst du einfach zu YouTube.com. Dort kannst du dir mit Suchwörtern wie „NeoCube making cube“ oder „Neo Cube“, in zwei Wörtern, jede Menge Tipps und Ideen holen.

Der NeoCube ist kein Kinderspielzeug und darf von Kindern unter 3 Jahren nicht benutzt werden. Kinder unter 8 Jahren dürfen den NeoCube nur unter Aufsicht Erwachsener verwenden. Bei verschluckten Magneten sofort an einen Arzt wenden.

## SVENSKA

Tack för att du köpte NeoCube!

NeoCube kommer att ge dig många timmars nöje. Börja med att experimentera fritt och skapa de former du vill! Kör du fast och vill lära dig hur du enklast skapar en kub, pyramid, hexagon eller någon annan form så besök YouTube.com och sök efter NeoCube med sökfraser som t.ex. NeoCube making cube. Pröva även att skriva Neo Cube i två ord för ännu fler sökträffar.

NeoCube är inte en leksak och får ej användas av barn under 3 år. Får endast användas av barn under 8 år under övervakning av vuxen. Kontakta läkare omedelbart om någon har svält en eller flera magneter.

## DANSK

Tak, fordi du købte en NeoCube!

NeoCube vil give dig mange timers fornøjelse. Begynd med at eksperimentere frit, og lav de figurer, du har lyst til! Hvis du kører fast og gerne vil lære, hvordan du lettest skaber en terning, en pyramide, en hexagon eller en helt anden form, kan du besøge YouTube.com og søge efter NeoCube med søgeord som f.eks. NeoCube making cube. Prøv også at skrive Neo Cube i to ord. Så får du endnu flere hits.

NeoCube er ikke legetøj og må ikke gives til børn under 3 år. Må kun bruges af børn under 8 år, hvis de er under opsyn af en voksen. Kontakt lægen med det samme, hvis en person har slugt en eller flere magneter.

